



## How do we measure impact?

By helping children like Gabe reach milestones many never thought possible.

Bleeding in the brain. Underdeveloped lungs. A hole in the heart. A bowel perforation. The complications due to Gabe's premature birth were life-threatening and Anna and her husband, Efiz, were terrified. "Doctors told us his prognosis was uncertain. If he survived, there was no way to know how severe his condition might be."

After seven long months in the hospital, Gabe came home. "As wonderful as that was, it was also overwhelming in a whole new way. He was still on oxygen and a feeding tube. I had to quit my job in order to care for both him and his older brother. Efiz had to go back to work. We both struggled with stress and depression."

Relief – and progress – came in the form of a team of therapists and special educators from Children's Therapy Center. In addition to helping Gabe learn to walk, eat, and talk, "they helped me, too," says Anna. "There were so many days when I'd be overwhelmed and they'd ask, 'How are you doing?' I would just say, 'I'm not.' They listened and gave me support – it was incredible. They helped me see little milestones and reminded me we were getting somewhere." Today, Gabe is walking, playing, and laughing with his brother – proof that in partnership with parents, we're maximizing the potential of children with special needs.



### CHILDREN'S THERAPY CENTER

2016 Annual Impact Report

**"There were so many days when I'd be overwhelmed. Gabe's therapists would ask me, 'How are you doing?' I would just say, 'I'm not.' They listened and gave me support – it was incredible. They helped me see little milestones and reminded me we were getting somewhere."**



DONATE.



VOLUNTEER.



ATTEND AN EVENT.

## Why We're Here

Because we believe in celebrating where each child is today and working toward who they can become.

Because although we serve thousands of children in our community each year, the need for our services continues to rise.

Because we believe every child eligible for services should have access to them regardless of their family's ability to cover the cost of care.

## Our Mission

Maximizing the potential of children with special needs.



## “CTC changed our lives.

For the first time, I wasn't alone. I still tear up thinking about the first time my son signed “Mommy” and reached out to me.”



DONATE.



VOLUNTEER.

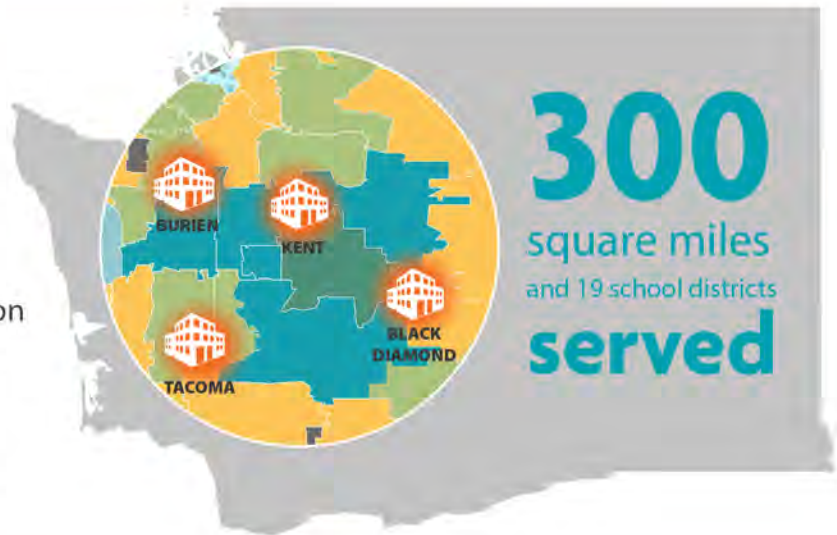
# 2016 Year in Review

Provided essential therapy and special education to **3,072** children in our community.





## Services Provided


- Comprehensive Evaluations
- Physical Therapy
- Occupational Therapy
- Speech-Language Therapy
- Oral Motor/Feeding Therapy
- Aquatic Therapy
- Early Childhood Special Education
- Family Resources Coordination
- Social Work
- Specialized Groups
- Parent Education and Support



**\$3M** provided to families unable to cover the full cost of care.

**100%**  Surveyed parents who report that their child has made progress in therapy.

**98%**  Surveyed parents who report that CTC has contributed to their ability to support their child at home, school or in the community.

**78%**  Families we serve who are moderate to very low income and have difficulty accessing services elsewhere.

 More than **1,300 children** served in our **Early Intervention program.**

 **\$1M** Taxpayer savings on special education costs as a result of our **Early Intervention program.**

ATTEND AN EVENT.

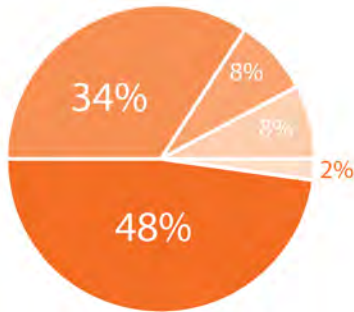


# 2016 Annual Impact Report

## Year in Review

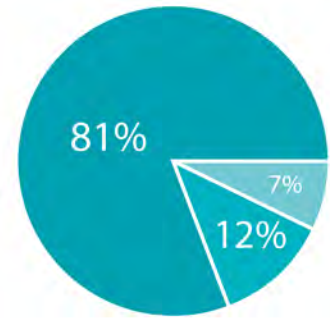
### REVENUE

- 48% School Contracts\*
- 34% Insurance
- 8% Fundraising
- 8% Social Enterprise
- 2% Other



### EXPENSES

- 81% Programs and Services
- 12% Administration
- 7% Social Enterprise



\*Schools contract with CTC to provide Early Education services to help children prepare to enter school.

### WHO WE ARE

Children's Therapy Center is the largest and most comprehensive nonprofit pediatric therapy program for children with special needs in Washington State.



**CHILDREN'S THERAPY CENTER**



**For more information**

p: 253.854.5660 | e: [info@ctckids.org](mailto:info@ctckids.org) | w: [www.ctckids.org](http://www.ctckids.org)